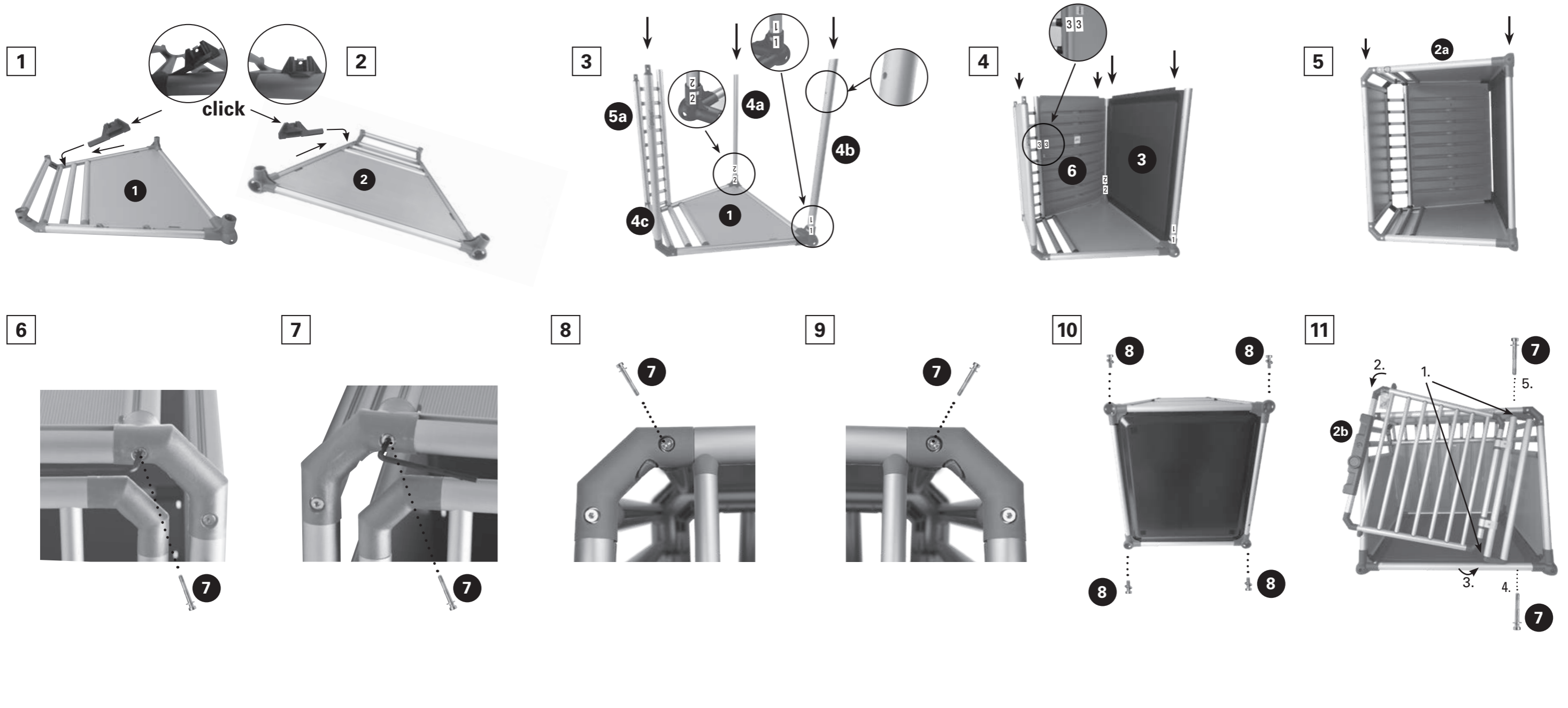
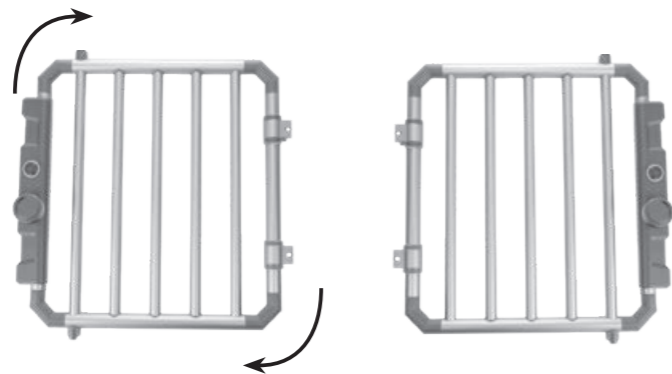


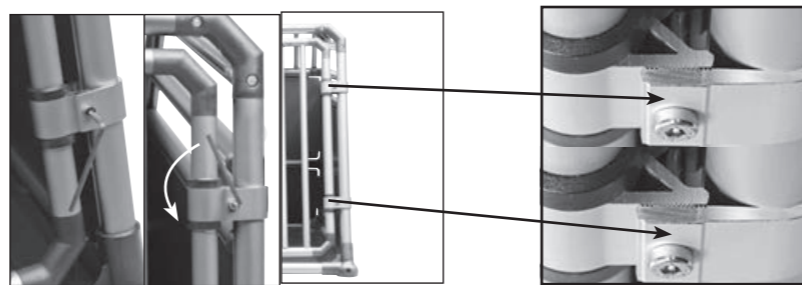
# Montageanleitung / Instructions for assembly / Istruzioni di montaggio / Guide de montage



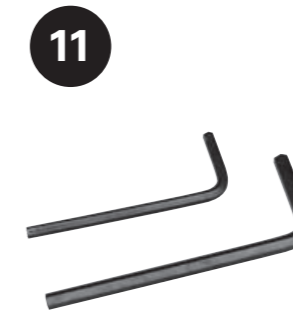
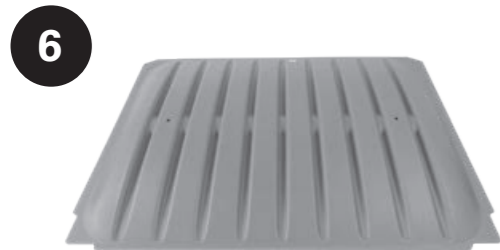
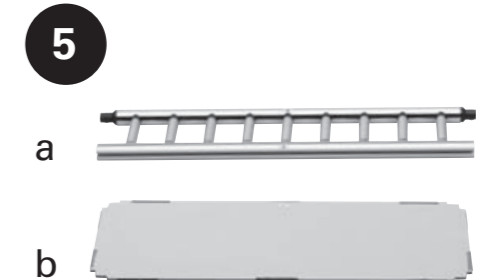
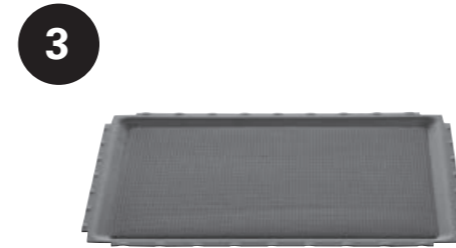
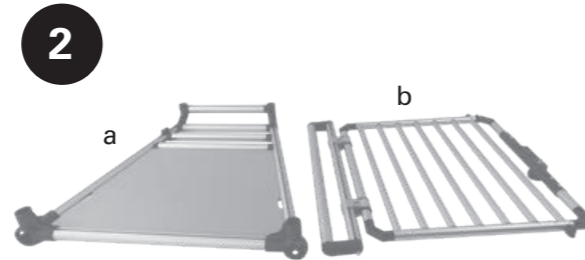
Türdrehen / Door rotation /  
Girando porta / Porte tournant



Türjustierung / Door adjustment /  
Regolazione porta / Ajustement de la porte



# Lieferumfang / Scope of supply / Volume della fornitura / Etendue des fournitures



## D

- 1 Seitenwand links
- 2 Seitenwand rechts / Türe
- 3 Bodenelement
- 4a Nummeriertes Bodenprofilrohr (vorne)
- 4b Nummeriertes Bodenprofilrohr (hinten)
- 4c Dachverbinder (vorne)
- 5 Dachelement
- 6 Rückwand/IPS
- 7 Vier lange Schrauben mit Scheiben M6x45
- 8 Vier kurze Schrauben mit Scheiben M6x16
- 9 Zwei Linsenschrauben
- 10 Verbinder Traverse
- 11 Inbusschlüssel (2x) M6x22
- 12 Hersteller-Dokumentation

## E

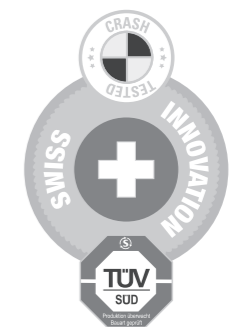
- 1 Side wall left
- 2 Side wall right / door
- 3 Floor element
- 4a Numbered floor profile tube (front)
- 4b Numbered floor profile tube (rear)
- 4c Roof connector (front)
- 5 Roof element
- 6 Rear wall/IPS
- 7 Four long screws with washers M6x45
- 8 Four short screws with washers M6x16
- 9 Two lens screws
- 10 Traverse connector
- 11 Allen key (2x) M6x22
- 12 Manufacturer documentation

## I

- 1 Parete laterale sinistra
- 2 Parete laterale destra / porta
- 3 Elemento del pavimento
- 4a Tubo profilato per il pavimento numerato (davanti)
- 4b Tubo profilato per il pavimento numerato (dietro)
- 4c Elemento di collegamento del tetto (davanti)
- 5 Elemento del tetto
- 6 Parete posteriore/IPS
- 7 Quattro viti lunghe con rondella M6x45
- 8 Quattro viti corte con rondella M6x16
- 9 Due viti con testa a bottone
- 10 Connettore traverse
- 11 Chiave a brugola (2x) M6x22
- 12 Documentazione fabbricante

## F

- 1 Paroi latérale gauche
- 2 Paroi latérale droite / porte
- 3 Paroi inférieure
- 4a Tube profilé et numéroté pour la paroi inférieure (avant)
- 4b Tube profilé et numéroté pour la paroi inférieure (arrière)
- 4c Elément d'assemblage paroi supérieure (avant)
- 5 Paroi supérieure
- 6 Paroi arrière/IPS
- 7 Quatre vis longues avec rondelles M6x45
- 8 Quatre vis courtes avec rondelles M6x16
- 9 Deux vis à tête bombée
- 10 Connecteur traverse
- 11 Clé à six pans (2x) M6x22
- 12 La documentation fabricante



pro 4